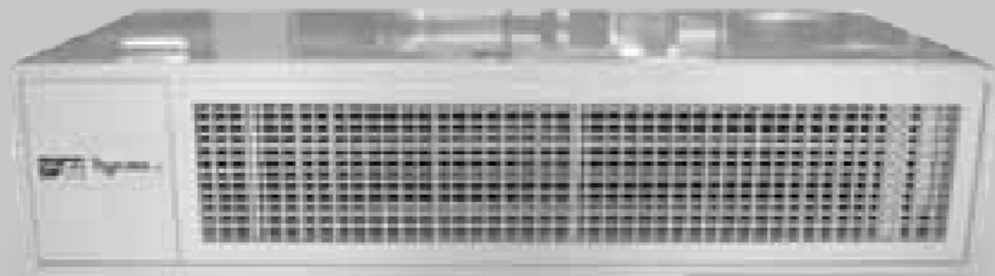


DECORATIVE FAN COIL UNIT



SPECIFICATIONS

CABINET

Single skin or double skin casing (inner perforated sheet or flat sheet) made of powder coated galvanized steel assembled in aluminum extrusion profiles, with 15mm thick closed cell foam insulation.

Option: For hygienic unit, inner stainless steel sheet (additional cost).

FAN SECTION

Fan Motor: 3 speed fan motors with permanent split capacitor, thermal overload protection, and lifetime lubricated ball bearing.

Fan Blower: DIDW forward curved centrifugal fan blower made of galvanized steel directly driven by fan motors.

All fan blowers are statically and dynamically balanced.

COIL SECTION

Cooling coils made out of 10mm or 12mm OD copper tubes mechanically bonded into aluminum fins, with copper header; fin thickness 0.1mm, with fin spacing 2.0mm (12FPI). Cooling coils are ARI rated.

DRAIN PAN

Drain pan made of powder coated galvanized steel along with auxiliary drain pan extending under valve package, insulated with closed cell foam.

Option: Drain pan made of stainless steel (additional cost).

FILTER SECTION

12mm thick aluminum return air filter assembled in aluminum frames provided for easy withdrawal and replacement.

AIR GRILLE

Horizontal Unit: Double deflection supply air grille and stamped return air grille.
Vertical Unit: Plug-in Supply Air Grille and Return Air Grille (optional extra).

HEATER BATTERY

PTC Electrical Heater Battery is supplied with inbuilt thermal protection for heating application on special requirement (additional cost).

Unit Model ¹		HDFC-02F	HDFC-03F	HDFC-04F	HDFC-05F	HDFC-06F	HDFC-08F	
Unit Performance								
Nom. Airflow Rate	High	(L/S)	95	142	189	236	284	378
	Medium	(L/S)	86	131	175	219	264	353
	Low	(L/S)	78	117	156	195	234	311
External Static Pressure		(Pa)	Free Blow					
Noise Level ²	High	dB(A)	<45	<46	<50	<48	<49	<53
	Medium	dB(A)	<43	<44	<47	<45	<47	<50
	Low	dB(A)	<40	<41	<45	<44	<44	<48
Physical Data								
Cooling Coil Size ³	Fin Height	(mm)	150	150	200	150	200	200
	Fin Length	(mm)	610	610	610	864	864	1118
	Coil Style		3/8" OD Copper Tube + Aluminum fins 12 FPI					
	Max. Working Pre		20.0 Bar					
Power Supply			220-240V/1PH/50HZ					
Fan Motor	Motor Type		3-Speed Fan Motor					
	Output ²	(w)	30	35	40	50	60	80
	Power ² Consumption	(w)	45	50	65	75	145	216
	Qty		1	1	1	1	1	1
Fan Blower	Qty		1	1	1	2	2	2
	Size (Dia x L)	(mm)	160 X 200	160 x 200	160 x 200	160 x 200	160 x 200	160 x 200
	Fan Blower Type		Double Inlet Forward Curved Centrifugal Fan Blower					
Chilled Water Connection		(inch)	1/2" MPT					
Drainage Connection		(inch)	3/4" MPT					
Net Dimension ⁴	L x W x H	(mm)	660 x 830 x 295			660 x 1080 x 295		660 x 1340 x 295
Packing Dimension ⁴	L x W x H	(mm)	680 x 900 x 365			680 x 1150 x 365		660 x 1410 x 365
Net Weight ⁵	4 Row Coil	(kg)	30.0	30.0	36.0	43.0	49.0	64.0
	5 Row Coil	(kg)	31.0	31.0	38.0	46.0	52.0	68.0
	6 Row Coil	(kg)	32.0	32.0	40.0	48.0	54.0	71.0

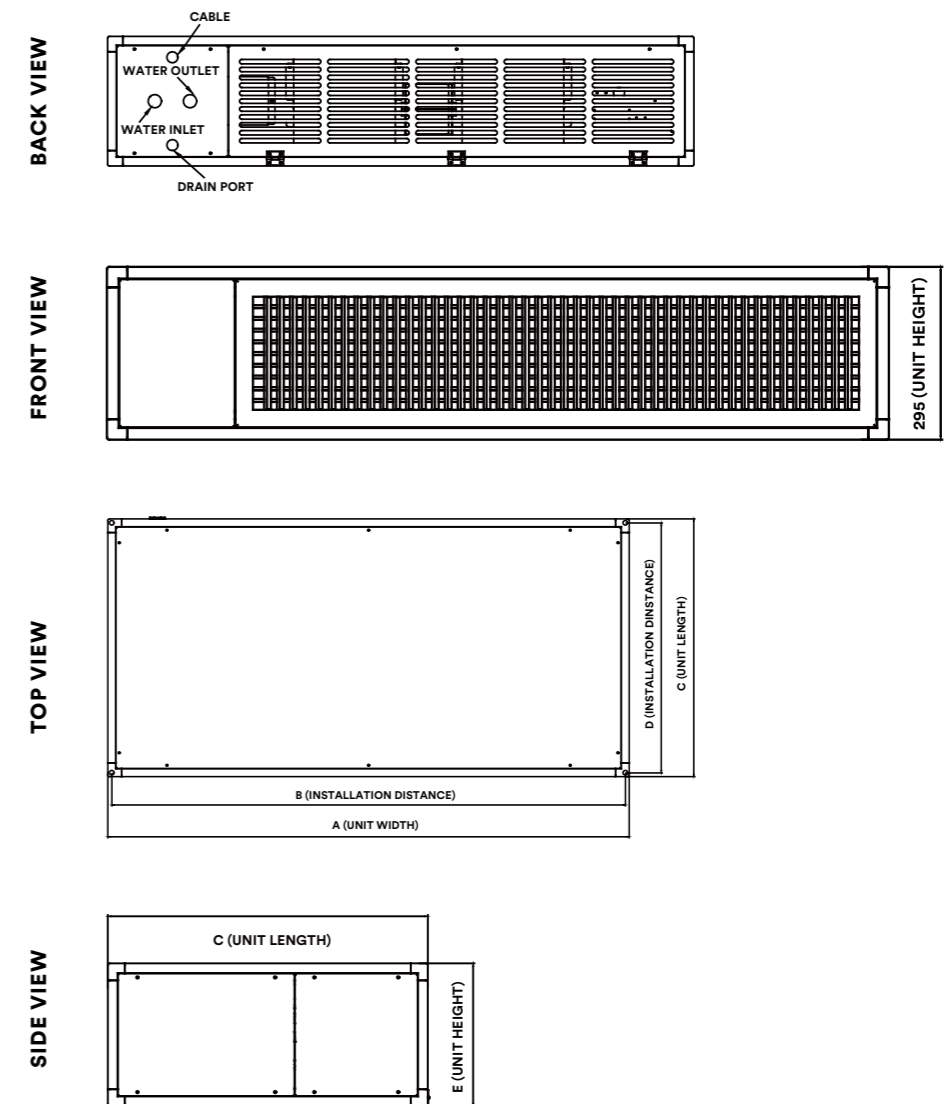
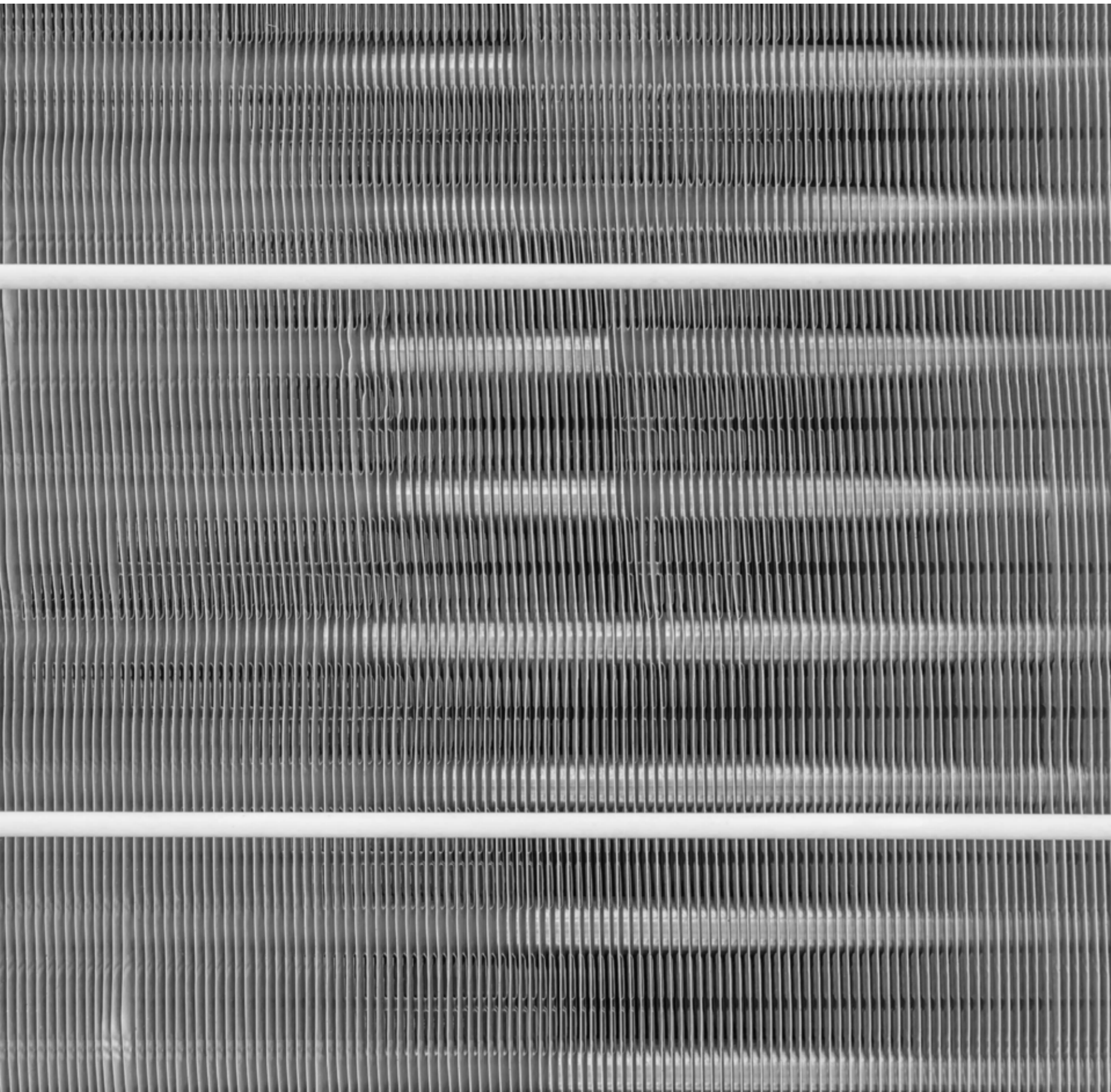
Unit Model ¹		HDFC-10F	HDFC-12F	HDFC-14F	HDFC-18F	HDFC-20F	
Unit Performance							
Nom. Airflow Rate	High	(L/S)	472	572	667	860	1080
	Medium	(L/S)	442	503	586	750	940
	Low	(L/S)	389	453	528	600	750
External Static Pressure		(Pa)	Free Blow				
Noise Level ²	High	dB(A)	<49	<51	<53	<57	<59
	Medium	dB(A)	<48	<49	<50	<55	<56
	Low	dB(A)	<46	<47	<47	<51	<53
Physical Data							
Cooling Coil Size ³	Fin Height	(mm)	200	200	200	250	300
	Fin Length	(mm)	1295	1473	1651	1651	1651
	Coil Style		3/8" OD Copper Tube + Aluminum fins 12 FPI				
	Max. Working Pre		20.0 Bar				
Power Supply			220-240V/1PH/50HZ				
Fan Motor	Motor Type		3-Speed Fan Motor				
	Output ²	(w)	50 + 50	55 + 55	60 + 60	105 + 105	145 + 145
	Power ² Consumption	(w)	228	240	288	480	576
	Qty		2	2	2	2	2
Fan Blower	Qty		4	4	4	4	4
	Size (Dia x L)	(mm)	160 X 200	160 x 200	160 x 200	180 x 200	180 x 200
	Fan Blower Type		Double Inlet Forward Curved Centrifugal Fan Blower				
Chilled Water Connection		(inch)	3/4" MPT				
Drainage Connection		(inch)	3/4" MPT				
Net Dimension ⁴	L x W x H	(mm)	660 x 1510 x 295	660 x 1690 x 295	660 x 1870 x 295	660 x 1870 x 395	
Packing Dimension ⁴	L x W x H	(mm)	680 x 1580 x 365	680 x 1760 x 365	680 x 1940 x 365	730 x 1900 x 430	
Net Weight ⁵	4 Row Coil	(kg)	75.0	85.5	89.0	92.0	96.0
	5 Row Coil	(kg)	79.0	90.0	93.5	98.0	104.0
	6 Row Coil	(kg)	83.0	94.5	98.0	104.0	112.0

NOTES

- (1) Unit Model differs in the extended letters indicating different cabinet construction, as per "unit model identification".
- (2) Unit noise level and fan motor output are stated based on 4-row cooling coil, and can be different for units with other cooling coils.
- (3) 1/2' tubing coil are available for all models with different coil sizes.
- (4) Net Dimension are same for single skin and double skin unit.
- (5) Net weight stated are for single skin cabinet structure units with Aluminum Frame, and will be different for double skin units. Please add 3kg onto these weights in calculating the shipping weights.

NOTES

- (1) Unit Model differs in the extended letters indicating different cabinet construction, as per "unit model identification".
- (2) Unit noise level and fan motor output are stated based on 4-row cooling coil, and can be different for units with other cooling coils.
- (3) 1/2' tubing coil are available for all models with different coil sizes.
- (4) Net Dimension are same for single skin and double skin unit.
- (5) Net weight stated are for single skin cabinet structure units with Aluminum Frame, and will be different for double skin units. Please add 3kg onto these weights in calculating the shipping weights.



UNIT MODEL	A (mm)	B (mm)	C (mm)	D (mm)	E (mm)
HDFC-02F1SA/DA	830	810	660	640	295
HDFC-03F1SA/DA	830	810	660	640	295
HDFC-04F1SA/DA	830	810	660	640	295
HDFC-05F1SA/DA	1080	1060	660	640	295
HDFC-06F1SA/DA	1080	1060	660	640	295
HDFC-08F1SA/DA	1340	1320	660	640	295
HDFC-10F1SA/DA	1510	1490	660	640	295
HDFC-12F1SA/DA	1690	1670	660	640	295
HDFC-14F1SA/DA	1870	1850	660	640	295
HDFC-18F1SA/DA	1870	1850	690	670	395
HDFC-20F1SA/DA	1870	1850	690	670	395

Unit Model		VDFC-02F1	VDFC-03F1	VDFC-04F1	VDFC-05F1	VDFC-06F1	
Unit Performance							
Nom. Airflow Rate	High	(L/S)	95	142	189	236	284
	Medium		86	131	175	219	264
	Low		78	117	156	195	234
External Static Pressure		(Pa)	Free Blow				
Noise Level ¹	High	dB(A)	<45	<46	<50	<48	<49
	Medium		<43	<44	<47	<45	<47
	Low		<40	<41	<45	<44	<44
Physical Data							
Cooling Coil Size ²	Fin Height	(mm)	152	152	203	152	203
	Fin Length	(mm)	610	610	610	864	864
	Coil Style		3/8" OD Copper Tube + Hydrophilic Aluminum Fins 12 FPI				
	Max. Working Pre		20.0 Bar				
Power Supply			220-240V/1PH/50HZ				
Fan Motor	Motor Type		3-Speed Fan Motor				
	Output ¹	(w)	30	35	40	50	60
	Qty		1	1	1	1	1
Fan Blower	Qty		1	1	1	2	2
	Size (Dia x L)	(mm)	160 X 200	160 x 200	160 x 200	160 x 200	160 x 200
	Fan Blower Type		Double Inlet Forward Curved Centrifugal Fan Blower				
Chilled Water Connection		(inch)	1/2" MPT				
Drainage Connection		(inch)	3/4" MPT				
Standard Dimension ³	L x W x H	(mm)	878 x 295 x 593			1132 x 295 x 593	
Packing Dimension ³	L x W x H	(mm)	940 x 320 x 660			1190 x 320 x 660	
Net Weight ⁴	4 Row Coil	(kg)	31.0	31.5	36.5	43.5	48.0
	5 Row Coil	(kg)	32.0	32.5	39.0	46.0	50.0
	6 Row Coil	(kg)	33.0	34.0	42.0	48.0	52.0

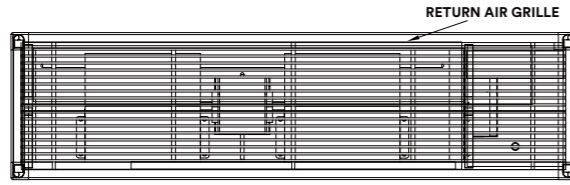


Unit Model		VDFC-08F1	VDFC-10F1	VDFC-12F1	VDFC-14F1	
Unit Performance						
Nom. Airflow Rate	High	(L/S)	378	472	572	667
	Medium		353	442	503	586
	Low		311	389	453	528
External Static Pressure		(Pa)	Free Blow			
Noise Level ¹	High	dB(A)	<53	<49	<51	<53
	Medium		<50	<48	<49	<50
	Low		<48	<46	<47	<47
Physical Data						
Cooling Coil Size ²	Fin Height	(mm)	203	203	203	203
	Fin Length	(mm)	1118	1295	1473	1651
	Coil Style		3/8" OD Copper Tube + Hydrophilic Aluminum Fins 12 FPI			
	Max. Working Pre		20.0 Bar			
Power Supply			220-240V/1PH/50HZ			
Fan Motor	Motor Type		3-Speed Fan Motor			
	Output ¹	(w)	80	50 + 50	50 + 50	60 + 60
	Qty		1	2	2	2
Fan Blower	Qty		2	4	4	4
	Size (Dia x L)	(mm)	160 X 200	160 x 160	160 x 200	160 x 200
	Fan Blower Type		Double Inlet Forward Curved Centrifugal Fan Blower			
Chilled Water Connection		(inch)	1/2" MPT	3/4" MPT		
Drainage Connection		(inch)	3/4" MPT			
Standard Dimension ³	L x W x H	(mm)	1385 x 295 x 593	1565 x 295 x 593	1740 x 295 x 593	1930 x 295 x 593
Packing Dimension ³	L x W x H	(mm)	1445 x 320 x 660	1625 x 320 x 660	1800 x 320 x 660	1980 x 320 x 660
Net Weight ⁴	4 Row Coil	(kg)	63.0	74.0	86.0	91.0
	5 Row Coil	(kg)	67.5	79.0	91.0	96.0
	6 Row Coil	(kg)	72.0	84.0	95.0	100.0

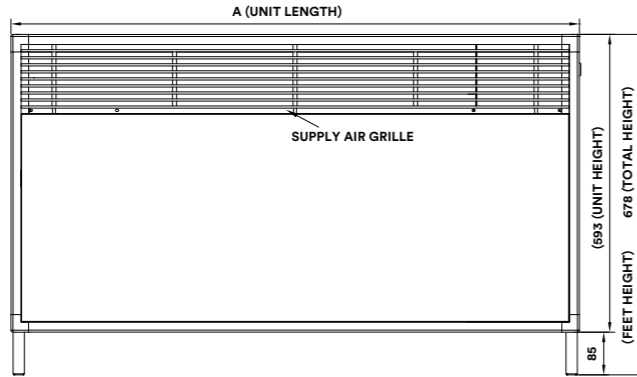
NOTES

- (1) Unit noise level & fan motor output are stated based on 4-row cooling coil, and can be different for units with other size cooling coils.
- (2) 1/2" OD copper tube cooling coils are also available for all models.
- (3) Standard dimension and packing dimension are stated based on 15 mm thick closed cell foam insulation.
- (4) Net weights are stated for double skin units; Please add 3kg onto net weight in calculating the shipping data.

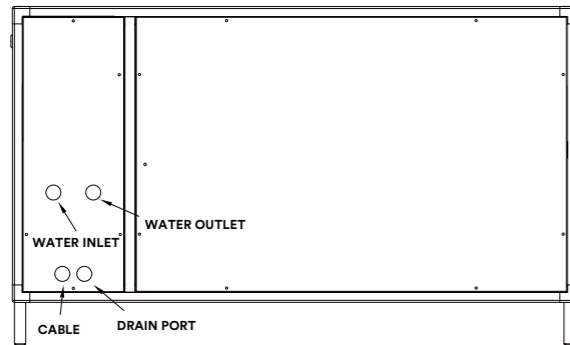
BOTTOM VIEW



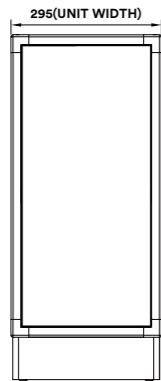
FRONT VIEW



BACK VIEW



SIDE VIEW



UNIT MODEL	A (mm)
VDFC-02F1	878
VDFC-03F1	878
VDFC-04F1	878
VDFC-05F1	1132
VDFC-06F1	1132
VDFC-08F1	1385
VDFC-10F1	1565
VDFC-12F1	1740
VDFC-14F1	1930

Unit Model	Rows of Coil	Fan Speed	Air on DBT/WBT 23°C/16°C				Air on DBT/WBT 24°C/18°C			
			Standard Application EWT/LWT 5.5°C/11.5°C		High Delta T Application EWT/LWT 5.5°C/14.5°C		Standard Application EWT/LWT 5.5°C/11.5°C		High Delta T Application EWT/LWT 5.5°C/14.5°C	
			T.C.	S.C.	T.C.	S.C.	T.C.	S.C.	T.C.	S.C.
			(kw)	(kw)	(kw)	(kw)	(kw)	(kw)	(kw)	(kw)
HDFC-02F	4	High	1.7	1.4	1.3	1.2	2.2	1.4	1.7	1.2
		Medium	1.6	1.3	1.2	1.1	2.0	1.3	1.6	1.1
		Low	1.5	1.2	1.2	1.0	1.9	1.2	1.5	1.0
	5	High	1.8	1.4	1.4	1.3	2.3	1.5	1.8	1.3
		Medium	1.7	1.3	1.3	1.2	2.2	1.4	1.7	1.2
		Low	1.6	1.2	1.2	1.1	2.0	1.3	1.6	1.1
6	High	2.1	1.6	1.7	1.4	2.7	1.7	2.3	1.5	
	Medium	1.9	1.5	1.6	1.3	2.5	1.6	2.1	1.4	
	Low	1.8	1.4	1.9	1.2	2.3	1.4	2.0	1.3	
HDFC-03F	4	High	2.2	1.8	1.7	1.7	2.8	1.9	2.2	1.6
		Medium	2.1	1.7	1.6	1.6	2.7	1.8	2.1	1.5
		Low	1.9	1.6	1.5	1.4	2.5	1.7	1.9	1.4
	5	High	2.4	2.0	1.9	1.8	3.1	2.1	2.4	1.8
		Medium	2.3	1.9	1.8	1.7	2.9	1.9	2.3	1.7
		Low	2.1	1.7	1.7	1.5	2.7	1.8	2.1	1.5
6	High	2.7	2.2	2.3	2.0	3.5	2.3	3.0	2.0	
	Medium	2.5	2.0	2.2	1.9	3.3	2.1	2.8	1.9	
	Low	2.3	1.8	2.0	1.7	3.0	1.9	2.6	1.8	
HDFC-04F	4	High	2.7	2.4	2.5	2.3	3.5	2.4	3.1	2.2
		Medium	2.5	2.2	2.3	2.1	3.3	2.3	3.0	2.1
		Low	2.4	2.0	2.2	2.0	3.1	2.1	2.8	2.0
	5	High	3.2	2.6	2.9	2.5	4.1	2.7	3.7	2.6
		Medium	3.0	2.5	2.7	2.4	3.9	2.6	3.5	2.4
		Low	2.8	2.3	2.5	2.2	3.6	2.4	3.2	2.2
6	High	3.6	2.9	3.2	2.7	4.7	3.0	3.9	2.7	
	Medium	3.4	2.7	3.1	2.6	4.4	2.8	3.7	2.5	
	Low	3.1	2.5	2.8	2.3	4.0	2.6	3.4	2.3	
HDFC-05F	4	High	3.4	2.9	2.9	2.7	4.4	3.0	3.7	2.7
		Medium	3.2	2.8	2.8	2.6	4.2	2.8	3.5	2.6
		Low	3.0	2.5	2.6	2.4	3.9	2.6	3.3	2.4
	5	High	4.0	3.3	3.2	3.0	4.7	3.2	4.1	2.9
		Medium	3.8	3.1	3.1	2.8	4.5	3.0	3.9	2.8
		Low	3.5	2.8	2.8	2.5	4.1	2.8	3.6	2.6
6	High	4.0	3.4	3.7	3.2	5.2	3.5	4.7	3.2	
	Medium	3.8	3.2	3.5	3.0	4.9	3.3	4.4	3.1	
	Low	3.5	2.9	3.2	2.8	4.5	3.0	4.1	2.8	

Unit Model	Rows of Coil	Fan Speed	Air on DBT/WBT 23°C/16°C				Air on DBT/WBT 24°C/18°C			
			Standard Appli- cation EWT/LWT 5.5°C/11.5°C		High Delta T Appli- cation EWT/LWT 5.5°C/14.5°C		Standard Appli- cation EWT/LWT 5.5°C/11.5°C		High Delta T Appli- cation EWT/LWT 5.5°C/14.5°C	
			T.C.	S.C.	T.C.	S.C.	T.C.	S.C.	T.C.	S.C.
			(kw)	(kw)	(kw)	(kw)	(kw)	(kw)	(kw)	(kw)
HDFC-06F	4	High	4.2	3.6	3.8	3.4	5.5	3.7	4.2	3.2
		Medium	4.0	3.4	3.6	3.2	5.3	3.5	4.0	3.0
		Low	3.7	3.1	3.4	3.0	4.9	3.2	3.7	2.8
	5	High	5.0	4.1	4.0	3.6	6.4	4.2	5.1	3.6
		Medium	4.7	3.8	3.8	3.4	6.1	4.0	4.8	3.4
		Low	4.3	3.5	3.5	3.1	5.6	3.6	4.5	3.1
	6	High	5.2	4.3	4.6	4.0	6.8	4.4	5.8	4.0
		Medium	5.0	4.0	4.3	3.7	6.5	4.2	5.5	3.8
		Low	4.6	3.6	4.0	3.4	5.9	3.8	5.1	3.4
HDFC-08F	4	High	5.6	4.8	4.7	4.4	7.3	4.9	5.9	4.3
		Medium	5.4	4.5	4.5	4.2	7.0	4.7	5.6	4.1
		Low	4.9	4.1	4.1	3.8	6.4	4.3	5.2	3.8
	5	High	6.6	5.4	5.5	4.9	8.5	5.6	7.0	4.9
		Medium	6.3	5.1	5.3	4.7	8.2	5.3	6.7	4.7
		Low	5.8	4.6	4.8	4.2	7.5	4.8	6.2	4.3
	6	High	7.2	5.7	6.3	5.3	9.3	6.0	7.4	5.2
		Medium	6.9	5.4	5.9	5.0	8.9	5.7	7.1	4.9
		Low	6.3	4.9	5.4	4.6	8.1	5.1	6.5	4.5
HDFC-10F	4	High	7.0	5.9	5.8	5.4	8.0	6.2	7.3	5.4
		Medium	6.7	5.6	5.6	5.2	7.7	6.0	7.1	5.1
		Low	6.2	5.1	5.2	4.7	7.1	5.4	6.5	4.7
	5	High	8.0	6.6	6.9	6.1	9.1	6.9	8.4	6.0
		Medium	7.6	6.3	6.6	5.8	8.7	6.6	8.1	5.7
		Low	7.0	5.7	6.0	5.3	8.0	6.0	7.4	5.2
	6	High	8.9	7.1	7.3	6.4	9.9	7.4	9.3	6.5
		Medium	8.6	6.8	7.0	6.1	9.4	7.0	8.9	6.2
		Low	7.8	6.1	6.4	5.5	8.6	6.3	8.2	5.6
HDFC-12F	4	High	8.4	7.1	7.0	6.5	10.1	7.0	8.5	6.3
		Medium	7.8	6.5	6.5	6.0	9.3	6.4	7.9	5.8
		Low	7.3	6.0	6.1	5.5	8.7	5.9	7.4	5.4
	5	High	9.6	7.9	8.1	7.2	11.5	7.8	10.2	7.2
		Medium	8.9	7.2	7.4	6.6	10.5	7.1	9.4	6.6
		Low	8.2	6.6	6.9	6.0	9.8	6.5	8.8	6.1
	6	High	10.4	8.4	8.9	7.8	13.5	8.8	11.3	7.8
		Medium	9.5	7.6	8.1	7.0	12.4	7.9	10.4	7.1
		Low	8.8	7.0	7.5	6.4	11.5	7.3	9.7	6.6

DECORATIVE FAN COIL UNIT

Unit Model	Rows of Coil	Fan Speed	Air on DBT/WBT 23°C/16°C				Air on DBT/WBT 24°C/18°C			
			Standard Appli- cation EWT/LWT 5.5°C/11.5°C		High Delta T Appli- cation EWT/LWT 5.5°C/14.5°C		Standard Appli- cation EWT/LWT 5.5°C/11.5°C		High Delta T Appli- cation EWT/LWT 5.5°C/14.5°C	
			T.C.	S.C.	T.C.	S.C.	T.C.	S.C.	T.C.	S.C.
			(kw)	(kw)	(kw)	(kw)	(kw)	(kw)	(kw)	(kw)
HDFC-14F	4	High	8.5	7.6	7.9	7.5	11.0	7.7	10.0	7.4
		Medium	7.9	7.0	7.3	6.8	10.2	7.1	9.2	6.7
		Low	7.4	6.5	6.9	6.3	9.6	6.6	8.7	6.3
	5	High	9.8	8.5	9.2	8.3	12.6	8.7	11.6	8.3
		Medium	9.0	7.7	8.4	7.5	11.6	7.9	10.7	7.6
		Low	8.4	7.1	7.8	6.9	10.9	7.3	10.0	7.0
	6	High	11.6	9.5	10.4	9.1	15.0	9.8	12.6	8.9
		Medium	10.6	8.6	9.5	8.2	13.7	8.9	11.6	8.1
		Low	9.8	7.9	8.8	7.5	12.8	8.2	10.8	7.4
HDFC-18F	4	High	12.0	10.5	9.0	8.9	15.6	10.7	11.8	9.2
		Medium	11.1	9.5	8.7	8.6	14.3	9.7	10.9	8.4
		Low	9.6	8.1	7.6	7.2	12.5	8.3	9.5	7.1
	5	High	14.7	12.1	12.0	10.9	17.9	12.0	15.0	10.8
		Medium	13.4	10.9	10.9	9.8	16.3	10.8	13.9	9.8
		Low	11.5	9.1	9.4	8.2	14.1	9.2	12.0	8.3
	6	High	16.0	12.9	13.1	11.6	19.5	12.9	16.6	11.7
		Medium	14.6	11.6	11.9	10.4	17.7	11.6	15.2	10.5
		Low	12.4	9.6	10.2	8.7	15.2	9.7	13.0	8.8
HDFC-20F	4	High	14.9	13.1	12.8	12.2	19.2	13.3	16.1	12.0
		Medium	13.7	11.8	11.8	11.0	17.7	12.1	14.8	10.9
		Low	11.8	10.0	10.2	9.3	15.4	10.3	12.9	9.3
	5	High	18.0	14.9	14.7	13.5	21.9	14.8	18.4	13.4
		Medium	16.5	13.5	13.4	12.1	20.0	13.4	16.9	12.1
		Low	14.1	11.3	11.5	10.1	17.2	11.3	14.7	10.2
	6	High	19.9	16.1	17.0	14.8	24.1	16.0	20.5	14.5
		Medium	18.0	14.4	15.4	13.3	21.9	14.4	18.7	13.0
		Low	15.3	12.0	13.1	11.0	18.7	12.1	16.0	10.9

DECORATIVE FAN COIL UNIT